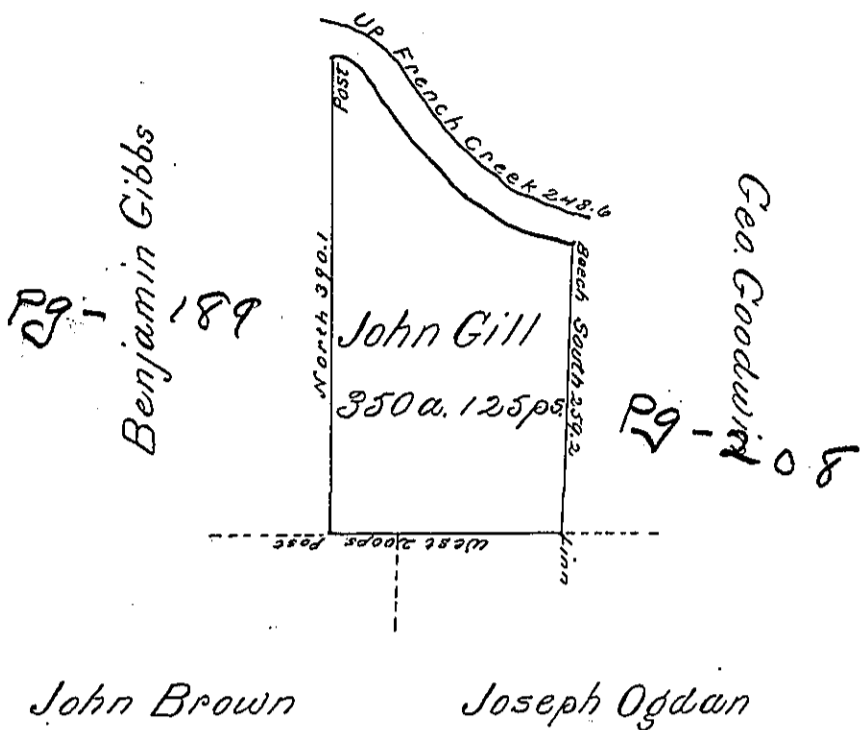


River Courses

- S. 72 1/2 ° E. 3
- S. 45 1/2 ° E. 30
- S. 26 ° E. 23
- S. 43 ° E. 28
- S. 54 1/2 ° E. 52
- S. 66 ° E. 48
- S. 52 ° E. 14
- S. 81 ° E. 40
- S. 71 ° E. 10.6
- ps. 248.6



Situate on the East side of and adjoining French Creek in Allegheny County Containing 350 ac 125 ps. and allowance of Six pcent for Roads &c. Surveyed the 12th day of November 1794 In pursuance of a Warrant Dated 13th. April 1792.

Wm. Power Dy Sr.

To Genl. Brodhead Esqr. }
 Surveyor General }

IN TESTIMONY that the above is a copy of the original remaining on file in the Department of Internal Affairs of Pennsylvania, made conformably to an Act of Assembly approved the 16th day of February, 1833, I have hereunto set my Hand and caused the Seal of said Department to be affixed at Harrisburg, this third day of October 1899

James W. Latta
 Secretary of Internal Affairs.